

Fire Alarm Board (interface)

****Fire Regulations**

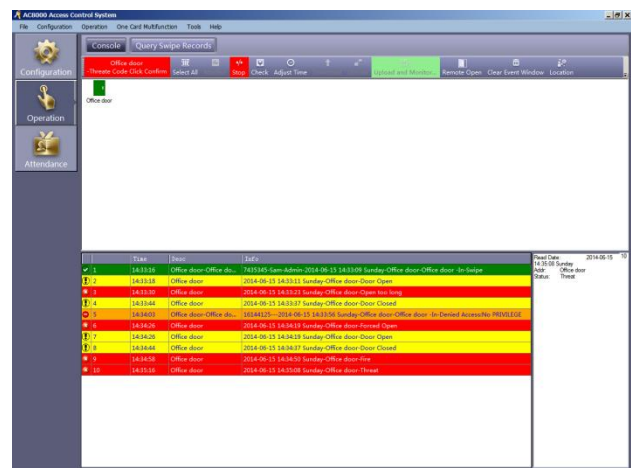
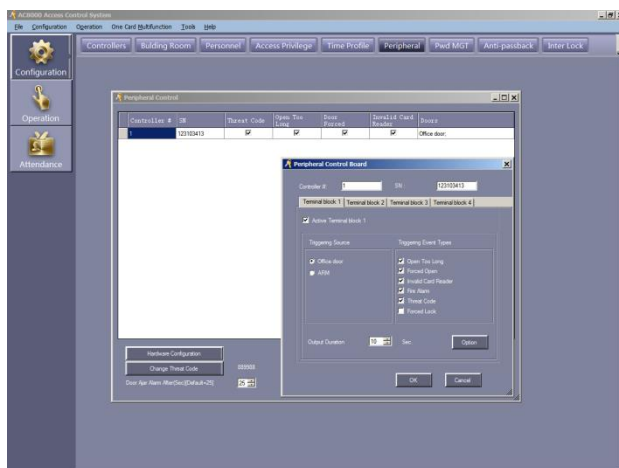
Please ensure you contact your local **Fire Officer** with regards to the inter-connection of access control equipment to your fire alarm system. More often than not, it will be acceptable to connect the fire alarm output to an independent auxiliary relay or double pole emergency break glass switch in order to deactivate the locking devices

The fire alarm panel manufacturer should always be contacted to ensure the auxiliary relays contained within the fire alarm panel, which will release the door, are of a suitable quality for life safety. Relays connected to any locking device must be energised in the non-alarm condition, i.e. the relay/s will be de-energised on alarm and will therefore tend to fail safe all devices connected

The AC-FAB (Fire Alarm Board interface) is an add-on module for the AC8000 PC Access Control System designed to accept a Normally Open contact input which then provides an alarm signal output via the software and/or activating any of the four timer relays provided in addition to ensuring the door/s are held in the unlocked state for as long as the alarm input is present (***Certain features of the AC-FAB will also require an RFID keypad and locking device fitted with door monitoring contacts***) It can also accept additional inputs to activate individual relays as and when required

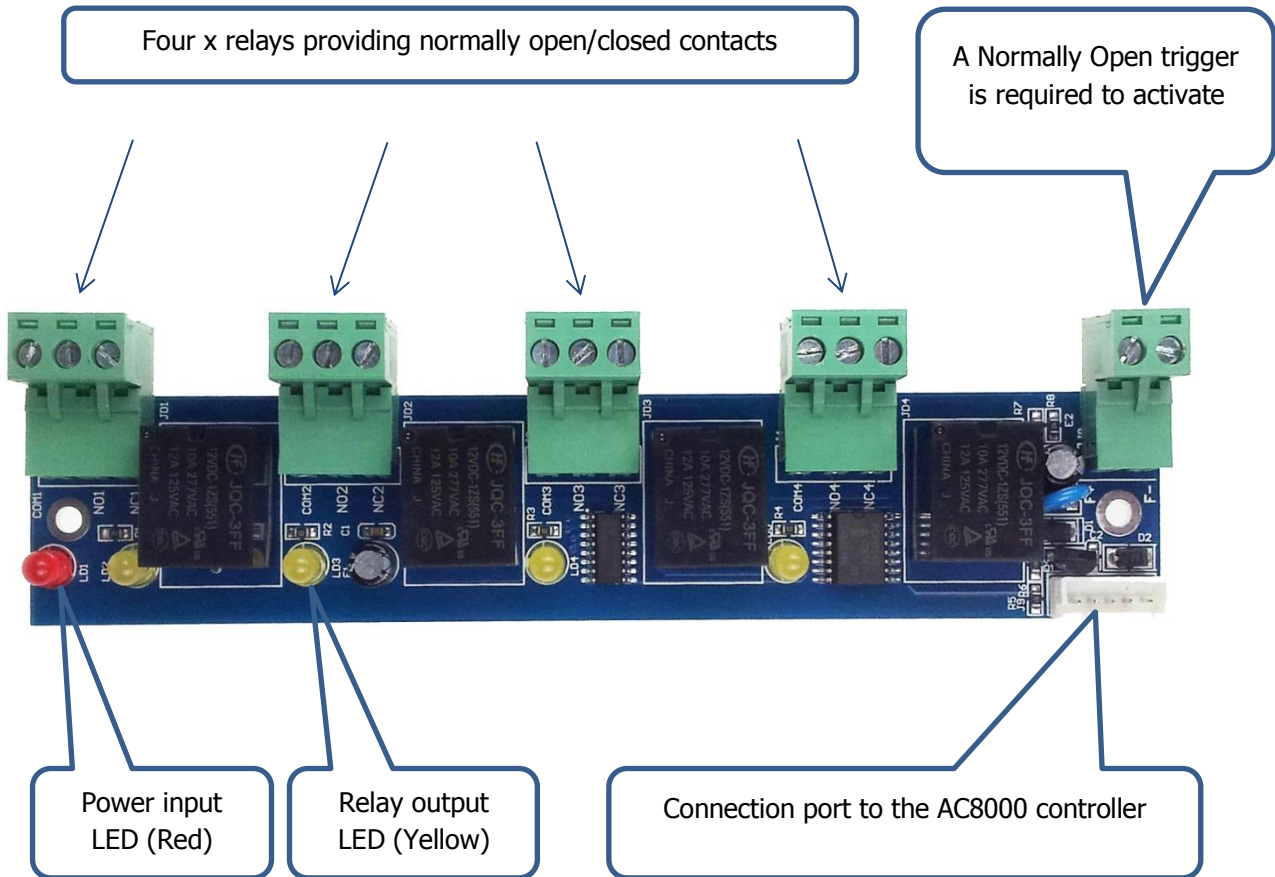
It has a simple software interface that can be configured to your own requirements supporting one manual Normally Open trigger input from an alarm system or emergency break glass switch, four timer relay outputs from 0 – 6000 seconds (1.66hrs), all providing Normally Open and Normally Closed outputs that can be connected to external sounders, flashing beacons or any other device requiring a volt free contact input. Six triggering options are available that can be programmed to activate one or all four relays

It supports and registers via the software an emergency threat PIN code (***RFID Keypad is required for this***), if the door is open too long, door forced open, invalid card used, fire alarm and forced lock



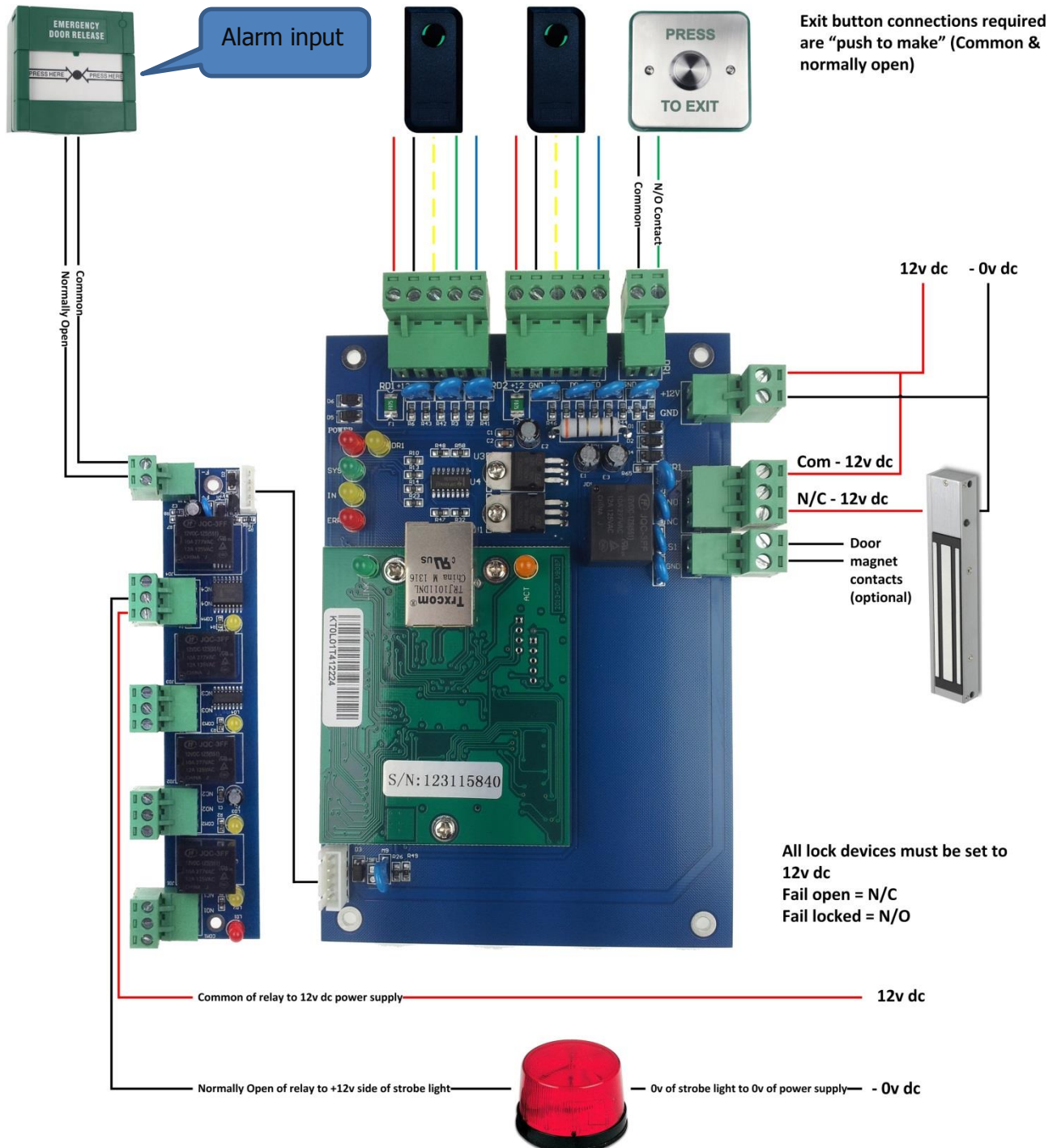
Fire Alarm Board (interface)

158l x 43w x 15h



Example of the AC-FAB being activated by the alarm input, but also triggering one of the four relay outputs to activate a strobe light from 0 – 6000 seconds (1.66hrs)

The alarm input will keep the door/s unlocked until it has been reset (Providing the Normally Open input is not removed)



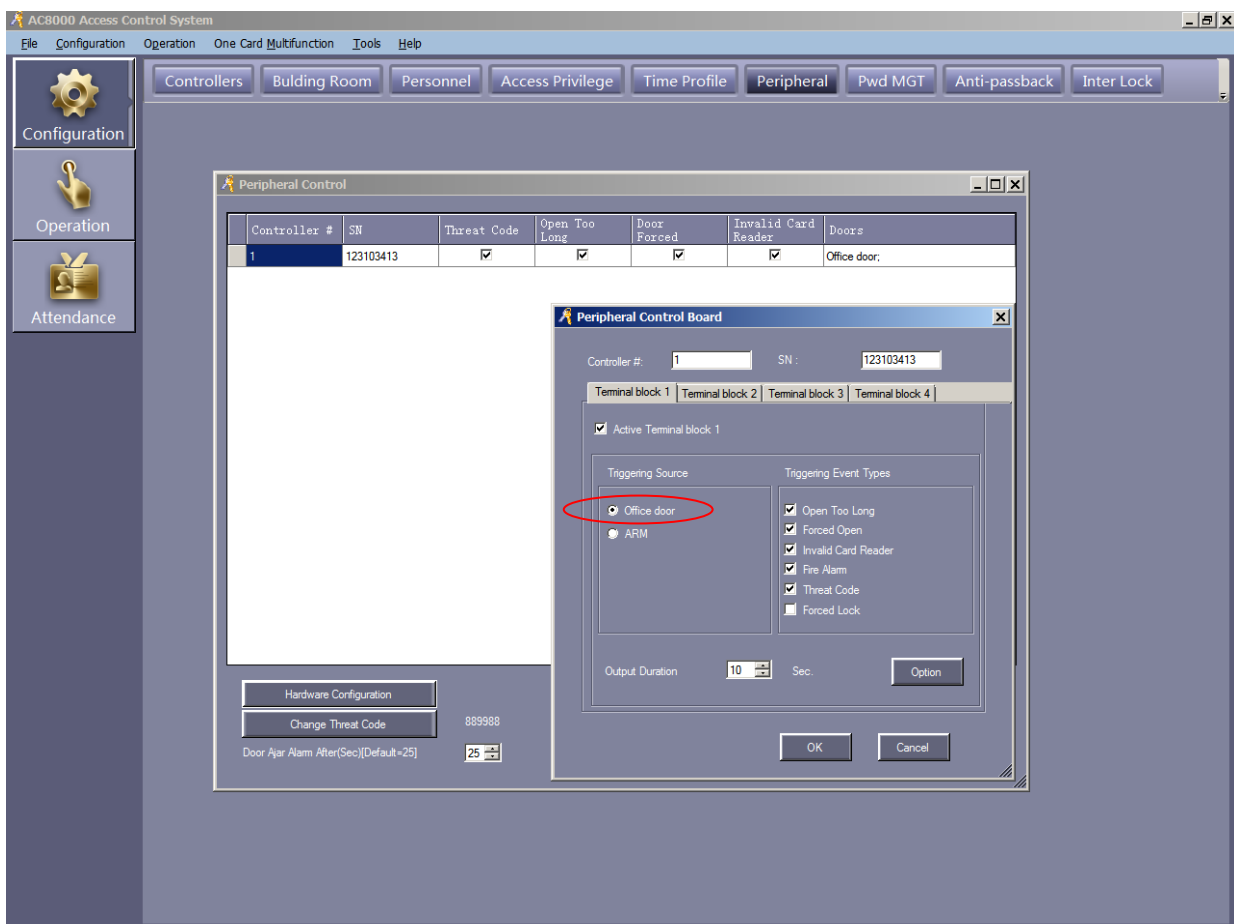
Peripheral

Configuration/Peripheral

The auxiliary relay board (Fire Alarm Board interface) has one manual Normally Open trigger input, two triggering sources (**Door or ARM ****) and four timer relay outputs from 0 – 6000 seconds (1.66hrs), providing Normally Open and Normally Closed outputs that can be connected to external sounders or flashing beacons etc. In addition to this, there are six triggering options that can be programmed to activate one or all four relays

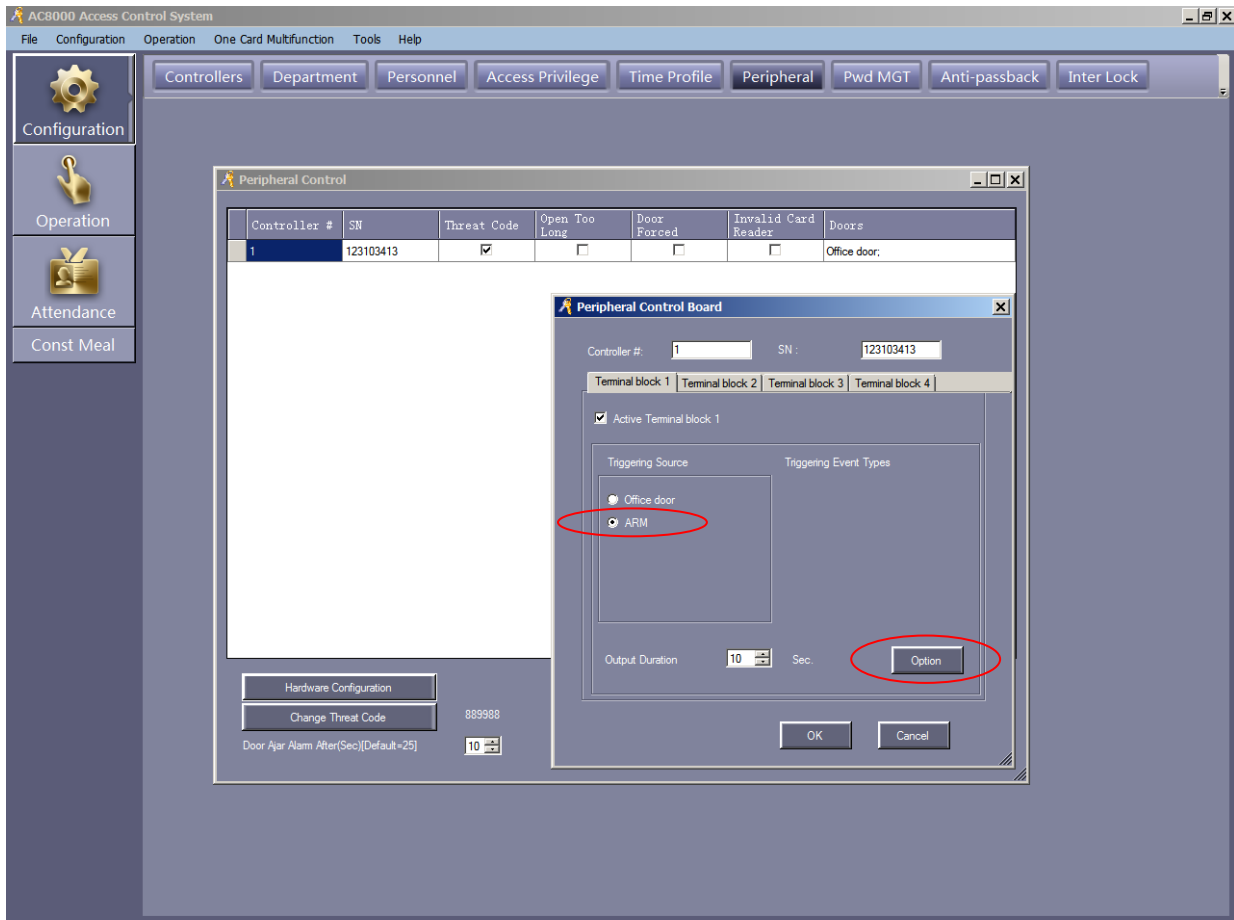
The example below shows the standard (**Door**) configuration setup requiring the software to display when the door is open too long, if the door has been forced open, if an invalid card is being used to gain entry, if the alarm input has been activated and if a threat code has been used

In order to program the relay outputs, click **Hardware Configuration**. We have set relay output one to activate for 10 seconds



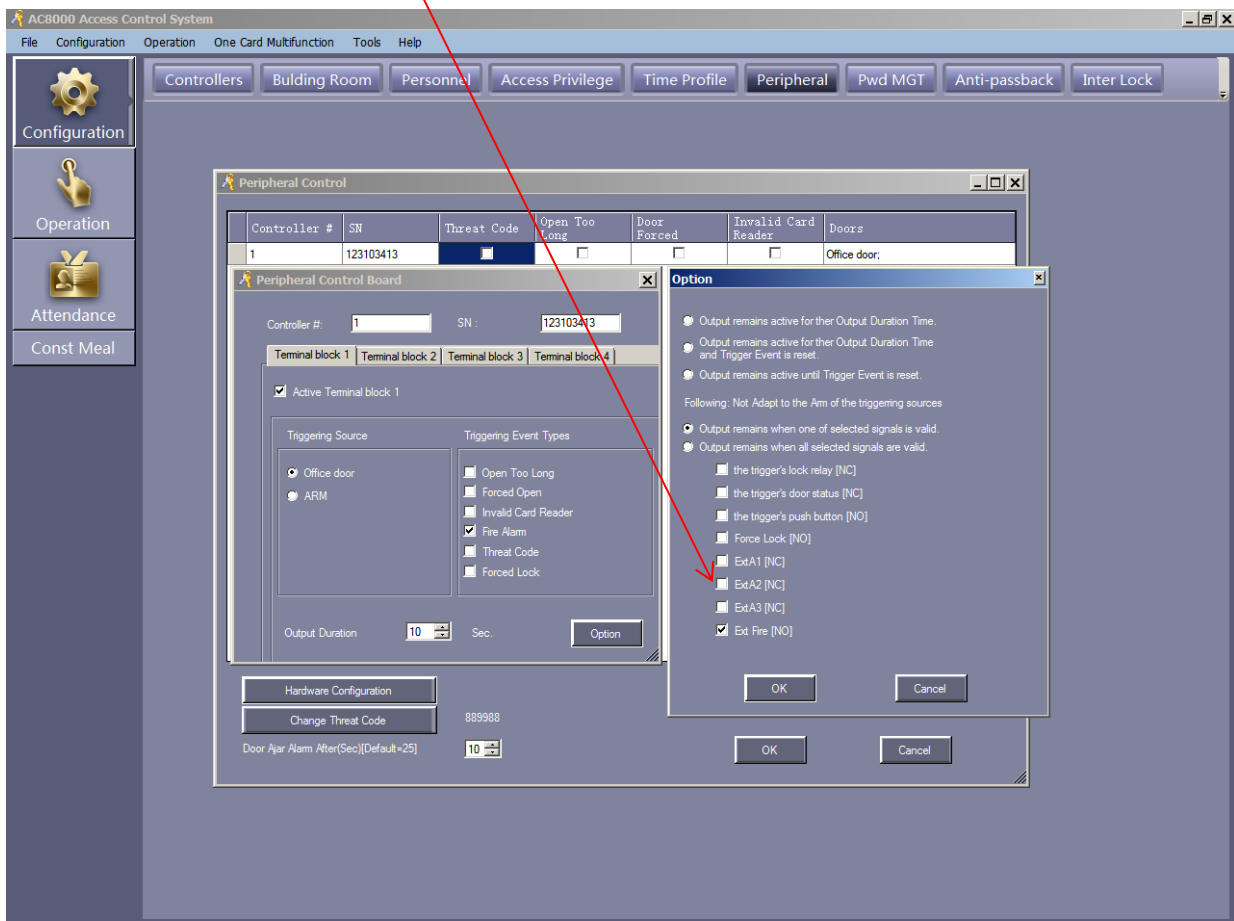
ARM **

The **Auxiliary Relay Method** option allows for additional inputs that can be used in conjunction with the standard **DOOR** configuration setup or independently to trigger the relay outputs (Non timed) and hold them open until the input has been reset, all of which can be configured by clicking the **OPTION** button. This example will trigger a Fire Alarm event via the software only and no relays will activate on the AC-FAB

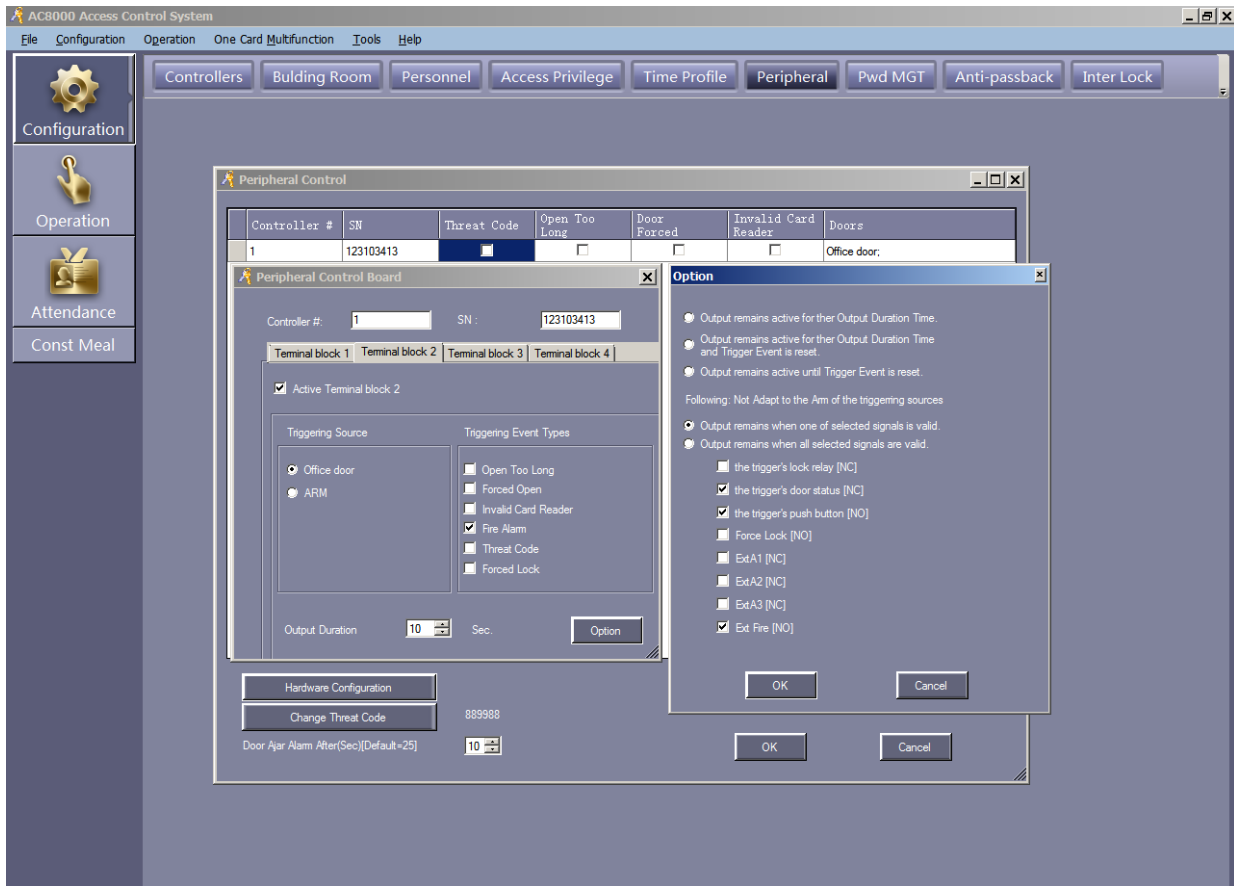


This configuration will trigger a Fire Alarm event via the software and also activate relay output number 1 indefinitely on the AC-FAB until the trigger is reset

Please note that options EXTA1/2/3 do not function on the AC-FAB



This configuration will trigger a Fire Alarm event via the software, the door status (Open or closed) as well as the exit button being pressed and activate relay output number 2 indefinitely on the AC-FAB until the trigger is reset



Option Button

An additional three options are provided as to what the relay output does for the timed duration which can be set from 0 - 6000 seconds (1.66hrs) or if using the ARM option, there are five possible signal inputs available

